

[Yeast Total Protein Extraction Kit for SDS-PAGE \(50 prep\) manual](#)

Cat.# Y203-50

Product Description

This Yeast Total Protein Extraction kit for SDS-PAGE provides a simple, rapid, and reproducible method for preparation of total cellular protein extracts from yeast *Saccharomyces cerevisiae* cells. This method uses our special lysis buffer PE1 and PE2 to enhance the permeability of yeast cell wall prior to protein extraction with cell lysis buffer PE3. The proteins extracted with our kit retain their immunoreactive properties and are suitable for a variety of applications in molecular biology and biochemistry studies, e.g recombinant protein analysis and Western Blot.

It provides reagents for up to 50x extractions and can easily be scaled up to accommodate larger amounts of cells. Generates total protein samples in about 30 minutes

Product Components

- 1) 15ml cell lysis buffer PE1
- 2) 15ml cell lysis buffer PE2
- 3) 5ml cell lysis buffer PE3

Shipping / Storage: Ship at room temperature. Store at room temperature.

Shelf Life: 24 months

Materials required but not provided

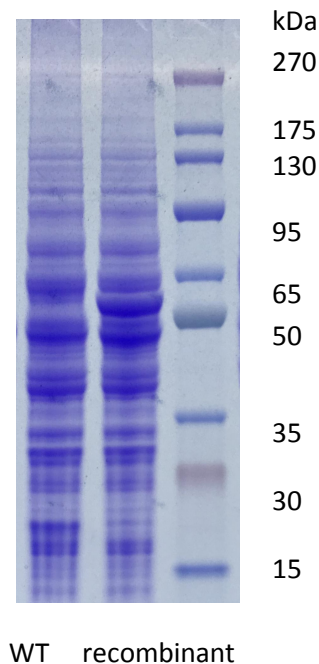
- 1) 1.5ml Eppendorf tubes.
- 2) Pipettes capable of dispensing 10 -1000 μ l.
- 3) SDS-PAGE gel loading tips
- 4) Ice
- 5) Benchtop dry bath
- 6) Benchtop centrifuge for Eppendorf tubes

Protocol

- 1) Grow up yeast *S. cerevisiae* cells in proper medium for overnight.
- 2) Measure the OD₆₀₀.
- 3) Add 10D of cells into a 1.5ml Eppendorf tube. Then are harvested by centrifuge and discard the supernatant.

- 4) Cells are first suspended in 300ul of cell lysis buffer PE1 at room temperature for 3-5min.
- 5) Centrifuge the cells and add cell lysis buffer PE2. Mix well and on ice for 5min.
- 6) Centrifuge the cells and resuspend in cell lysis buffer PE3. Place at 100°C on dry bath for 5-10min.
- 7) Then centrifuge to remove cellular debris. And 10ul of cell lysate is loaded onto the proper SDS-PAGE Gel.
- 8) The supernatant containing yeast whole protein extract can be stored at -80°C for later use.

Example of recombinant protein total cell lysate in yeast



-- The end --

Related products that our customers also buy:

https://www.101bio.com/P5W1_HRP_substrate.php

https://www.101bio.com/P5W8_WB_blocking_solution.php